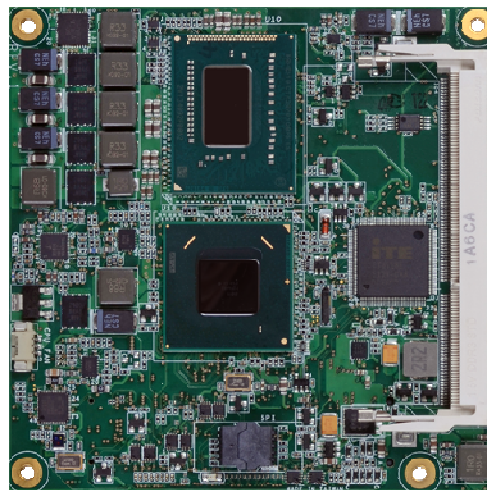
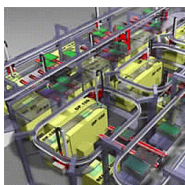


The H6818 is COM Express Compact module based on third generation Intel® Core™ i3/i5/i7 processors and the new Mobile Intel® QM77 Express chipset. The combination offers increased performance per watt and improved graphics and media processing capabilities. H6818 supports COM Express revision 2.1 and pin-out type 6 for full utilization of the advantages in the processor platform.

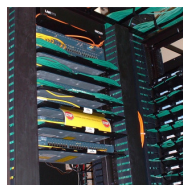
The improved graphics in the new Intel® Core™ i3/i5/i7 includes Intel® HD Graphics 4000, support for DirectX 11 and OpenGL 3.1. The pin-out type 6 is adapted to embedded applications requiring increased graphics performance and allows support for three independent displays in any combination of VGA, LVDS and DDI (HDMI, DVI, and DisplayPort) directly from the module. Intel® Quick Sync 2.0 improves the abilities for video transcoding.



Target markets and applications



Industrial Automation



Datacom/ Telecom



Medical



Offshore/ Marine



Gaming/ Infotainment



Defence

H6818 - Technical Specifications

Processor

- Intel® Core™ i7 3612QE, 3.1GHz, 6M cache, 35W TDP, quad-core

- Intel® Core™ i7 3555LE, 3.2GHz, 4M cache, 25W TDP, quad-core

- Intel® Core™ i7 3517UE, 2.8GHz, 4M cache, 17W TDP, quad-core

- Intel® Core™ i5 3610ME, 3.3GHz, 3M cache, 35W TDP, dual-core

- Intel® Core™ i3 3120ME, 2.4GHz, 3M cache, 35W TDP, dual-core

- Intel® Core™ i3 3217UE, 1.6GHz, 3M cache, 17W TDP, dual-core

- Intel® Celeron® Processor 807UE, 1.0GHz, 1M cache, 10W TDP, single-core

Note: Not all processor options will be stocking SKUs and might be subject to MOQs. Final information on this T.B.D.

Chipset

Mobile Intel® QM77 Express chipset

System Memory

One 204-pin DDR3 SODIMM socket

Supports DDR3 1066/1333/1600MHz up to 8GB

Single channel memory interface

DRAM device technologies: 1Gb, 2Gb and 4Gb DDR3 DRAM technologies are supported for x8 and x16 devices, unbuffered, non-ECC

Onboard Graphics Features

Intel® HD Graphics 4000

LVDS, VGA and DDI (HDMI, DVI, DisplayPort)

Three independent displays supported

LVDS: Single Channel – 18/24 bit;
Dual Channel – 36/48 bit

Display resolution up to 1920x1200

Full AVC/VC1/MPEG2 HW Decode

Onboard Audio Features

Supports High Definition Audio interface

Onboard LAN Features

Intel® 82579LM Gigabit Ethernet PHY

Integrated 10/100/1000 transceiver

Serial ATA (SATA) Interface

4 Serial ATA interfaces

2 SATA 3.0 with data transfer rate up to 6Gb/s
2 SATA 2.0 with data transfer rate up to 3Gb/s

Integrated Advanced Host Controller Interface (AHCI) controller

Watchdog Timer (Optional)

Watchdog timeout programmable via software from 1 to 255 seconds

Interfaces

8 USB 2.0 ports (4 support USB 3.0)

1 PCIe x16

1 PCIe x4 and 3 PCIe x1 or 7 PCIe x1 slot

4-bit input and 4-bit output GPIO

1 SMBus and 1 I²C interface

Damage Free Intelligence

Monitors CPU temperature

Monitors CPU fan speed

Monitors Vcore/VGFX/1.5V voltages

Watchdog timer function

BIOS

64Mbit UEFI SPI BIOS

Temperature

Operating: 0°C to 60°C

Storage: -20°C to 85°C

Humidity

10% to 90%

Power Input

Input: 12V, 5VSB, VCC_RTC

Regulatory

EMC: CE, FCC Class B, RoHS, UL

PCB

Dimensions:

- COM Express Compact
- 95mm (3.74") x 95mm (3.74")

Compliance

- PICMG COM Express R2.1, pin-out type 6

COM Express® is a registered trademark of the PCI Industrial Computer Manufacturers Group

HECTRONIC AB
Box 3002
SE-750 03 Uppsala
SWEDEN

Visitors address:
Fälhagsleden 59
Uppsala

Telephone: +46.18.660 700
Telefax: +46.18.660 701
E-mail: info@hectronic.se
Web: www.hectronic.se