

An automated software tool for testing the Hardware Platform Management and IPMC Firmware Upgrade functions in ATCA and AMC based building-blocks and systems.

The AtcaTest3 is an automated test suite for testing the Hardware Platform Management (HPM) implementation in ATCA platforms. It is based on the PICMG 3.0 Rev 3.0 ATCA base specification and the CP-TA ICD (Interoperability Compliance Document) and TPM (Test Procedures Manual) v 3.0. The Tester is designed for Hardware manufacturers, System Integrators and Telecom Equipment Manufacturers, who wish to reduce the time and resources spent on ATCA, AMC and HPM testing during the development and qualification of building-blocks or during system integration. The Tester helps to ensure that ATCA systems meet the compliance and certification requirements of CP-TA's ATCA certification program.

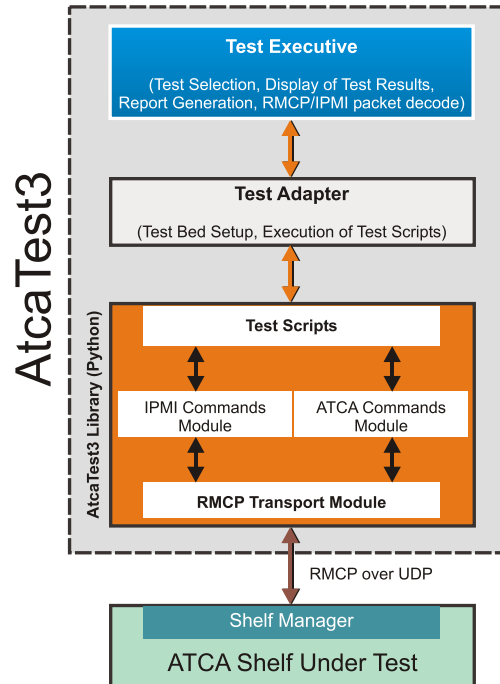


Figure: AtcaTest3 Architecture

BENEFITS

- The AtcaTest3 tests ATCA building blocks, such as Shelf Manager, FRUs, carrier boards, mezzanine cards for compliance with the system management requirements (Chapter 3) in PICMG 3.0 (AdvancedTCA) Rev 3.0. The building blocks can be tested independently or simultaneously in an integrated system. Benefits include:
 - ✓ Increased interoperability of building-blocks
 - ✓ Decreased development & integration time
 - ✓ Compliance with CP-TA's ATCA certification program

FEATURES

- Windows-based GUI for easy operation
- More than 375 Test scenarios based on:
 - ✓ CP-TA ICD and TPM v 3.0
 - ✓ ATCA Interoperability Workshops scenarios
 - ✓ PICMG 3.0 Rev 3.0
 - ✓ IPMI 1.5
- Test Categories:
 - ✓ IPMC Tests
 - ✓ FRU Tests
 - ✓ Shelf Tests
 - ✓ Network Tests
 - ✓ HPM Tests
- Useful for testing different types of management controllers

- Error level mapped to the specification requirements

Specification Requirement	Error Level when Requirement is not met
"Shall"	Error
"Should"	Warning
"May"	Info

- Each test case maps to one PICMG 3.0 Rev 3.0 requirement
- Ability to filter test results based on Test, Test Verdict, Test Start Time and Test End Time
- Test scripts are available in source code form and are fully editable
- New Tests may be added by the user

- Complete Decode of IPMI/RMCP packets sent or received during the test execution
- Test reports in HTML format
- Tests may be repeated for a desired number of iterations
- Tests may be scheduled for future execution
- Tools included
 - TCA Explorer
 - FRU Dump
 - SDR Dump

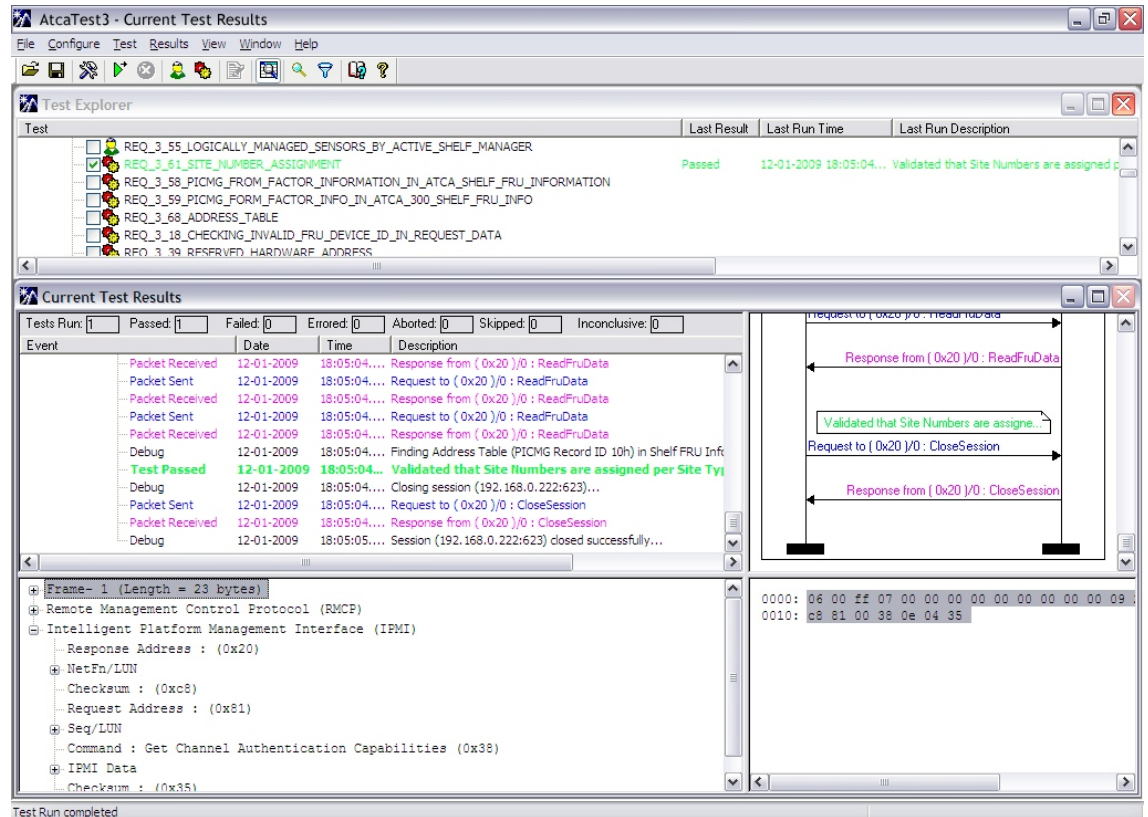


Figure: GUI of AtcaTest3

TECHNICAL SPECIFICATIONS

System Requirements

- Windows operating system. Supported versions include Windows XP Professional, Windows Vista Business and higher editions, and Windows 7
- 1 GB of RAM
- 10 GB of free hard disk space
- 1 free USB port for license key

CONTACT INFORMATION

For further information, call a Polaris Networks sales representative at the phone numbers listed below, or email us at: sales@polarisnetworks.net

US Office

Polaris Networks Inc.
75 Robbins Road
Lexington, MA 02421
USA
Phone: +1-781-862-4900

India Office

EP Y3, Sector V,
Salt Lake Electronics Complex
Kolkata 700091
India
Phone: +91-33-23575511
VoIP: +1-781-652-9603